



*Cine*VERSUM

V1.0

photo by courtesy of Frankston HiFi - Australia



BLACKWING mk2011 SERIES

HD VIDEO-PROJECTORS FOR 2D AND 3D HOME-CINEMA



| Designed in France

French designer Antoine Béon wanted the Blackwing line to celebrate the idea of speed and precision with this unforgettable futuristic shape. Hence the name, BlackWing. With its subtle shapes and purity of form, the Cineversum BlackWing definitely brings you the timelessness and elegance of our City of Lights, Paris.

| Luxurious Material

The chassis made in ABS-PC, a material also used in the car industry, is a valour in itself. Beyond its extreme resistance to shocks, it also absorbs heat and noise, reducing the working noise level of BlackWing to 19 dB. Last touch, the car paint gives the Blackwing mk2011 Series a luxurious and elegant finish.

All accessories, such as the tailor-made Ceiling Mounting Kit and Cine-Twist anamorphic Kit, are made with premium components and the most robust materials.



3D



| Enter a new world with the Blackwing 3D Series

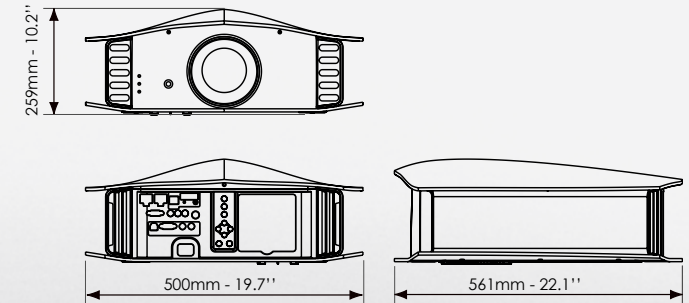
Watching 3D content on a flat-panel TV is like looking into a doll-house. Only the Blackwing Series can reproduce at home the immersive experience of 3D commercial theatres.

Our 3D glasses benefit from the latest ergonomic innovations and technologies. It adopts fast-response liquid crystal lenses to create the best image quality: Exceptional image quality without ghosting wherever you sit. Higher brightness, more natural colors and great durability.

Weighing only 58 gr (2 oz)! Our ergonomic design offers optimal comfort for everyone. The supplied 3D Synchro Emitter allows easy integration in a few minutes time.



BLACK WING 3D



Items may differ from photos - Children under 5 should not watch 3D images

| Cinema-like Performance

The association of the full-glass *Pro Grade Lens* with a superior 3 chips L-COS 1080p Full-HD engine (up to 100,000:1 contrast ratio on the BW3) gives the best out of any picture. The internal video-processor enhances the input signal quality and removes video noise.

BlackWing One comes with 6 preset *Picture Modes*. Personal settings can be stored onto one of these 6 pre-configured profiles or the 3 blank user profiles.

On models Two and Three Cineversum added a 7th mode, *TH-PRO*, optimized for movie watching in a dedicated dark cinema room. Thanks to the new 7-axis HSL calibration, it has never been so easy to obtain a perfect picture.

An Expert Calibration Menu (via RS232) and CMS functions (Color Management System for color calibration) are accessible for the advanced installers of BlackWing Two and Three.

The improved 120 Hz *Crystal Motion* mode allows more flexibility by featuring interpolation, black frame insertion and inverse telecine computation. Enjoy live events (sports, concerts, theatre) and TV shows with a true-to-life projection.



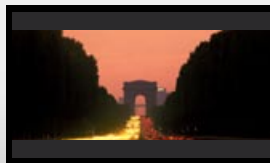
Thanks to the new *True Cinema Black* process of the BlackWing Two and Three, dark scenes still remain very detailed and balanced, despite the amazing level of contrast.

| Cine-Twist, the real cinema experience at home

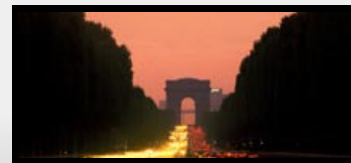
The *Cine-Twist* Kit is compatible with the BlackWing mk2011 series and the Cineversum Theatre Screens. Thanks to this proprietary accessory, you will be able to watch movies in their genuine cinemascope format on a real cinemascope screen (2.35:1). This recreates the ambiance and immersive experience of commercial theatres inside your home cinema.



The benefits over a 16:9 projection are the use of all the pixels of the matrix (saving the 33% of resolution usually wasted in the black bars) and increase in brightness (+25%) allowing the use of bigger screens. If you want to watch a classic 16:9 program, such as sports or TV shows, the *Cine-Twist* kit will pull the anamorphic lens off the projector.



a movie on a 16:9 screen



Same movie on a 2.35 cinemascope screen

| Installation Versatility

The fully motorized *Pro Grade Lens* (zoom, shift and focus) of the Blackwing will make the installation job extremely easy. The 2x zoom (1.4-2.8:1 throw ratio) should be compatible with any kind of room.

The vertical and horizontal lens shift capability can address most challenging configurations. In the worst case, with the keystone correction, it is child's play to adjust the projector for the most razor-sharp picture.



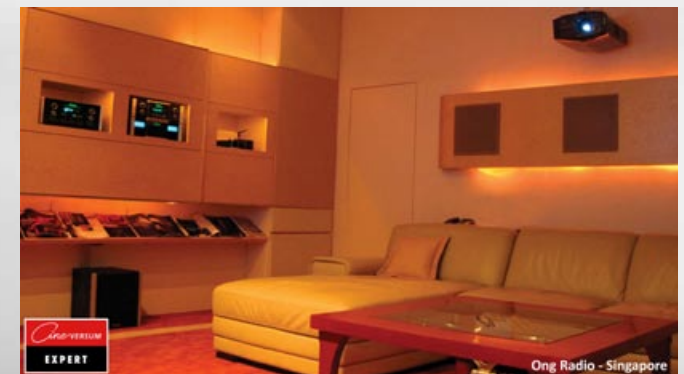
| Extreme Attention to Details

Every single unit is carefully tested and individually calibrated by our 20-years experienced video engineer. Each components are drastically hand-selected for their performance, purity and resistance to time.

| A dedicated Cineversum Network

The BlackWing mk2011 Series are distributed and installed through a network of experienced, skilled and carefully selected Cineversum authorized dealers and custom installers. The guarantee of a real tailor-made approach.

In Rio, Shanghai, London or Moscow, there are Cineversum partners all around the World. You can find the list on our website www.cineversum.com or can contact us by e-mail at info@cineversum.com



Model Version	BlackWing High Brightness	BlackWing One	BlackWing Two	BlackWing Three
Model Part Number	R9201104	R9201101	R9201102	R9201103
Panel Technology	3-chip LCOS 0.7 inch panel - Full-HD 1920x1080 Resolution			
Screen Size (16:9)	60" - 240" diagonal			
Lamp Consumption	220 W Bulb - up to 3000 hours (with lamp used in standard mode)			
Brightness	1700 ansi lumens	1300 ansi lumens		
Contrast Ratio	30 000:1	50 000:1	70 000:1	100 000:1
Noise Level	Less than 19 dB			
Inputs	2x HDMI rev 1.4a 1x Component (3 RCA) 1x Analogue PC (Dsub15)	2x HDMI rev 1.4a 1x Component (3 RCA)	2x HDMI rev 1.4a 1x Component (3 RCA) 1x Analogue PC (Dsub15)	
Adjustable Lens Aperture	16 steps			
SLM™, Smart Lamplife Management	NO		Automatic (Configurable)	
Expert Calibration Menu	NO		YES (for calibration expert only)	
Picture Mode Presets	3	6	6 + TH-PRO + 4 for Installation Expert only	
Home-cinema Video Processing	Crystal Motion®		Crystal Motion® True Cinema Black®	
Film Tone	NO		YES	
Screen Adjustment	3 Modes		99 Modes	
3D Compatibility	Frame Sequential with Active Shutter Glasses, Frame Packing, Side-by-Side and Above-Below			
CMS Functions	YES (7-Axis)	NO	YES (7-Axis)	
Optic	Full-glass Motorized (zoom & focus)			
Throw Ratio	1.4 - 2.8:1 (2x zoom)			
Screen Offset	Motorized Optical Shift +/- 80% vertically +/- 34% horizontally			
Weight	15.0 kg (33.7 lbs)			
Dimensions (LxWxH)	550 x 530 x 200 mm (21.7 x 20.9 x 7.9 inches)			
Home Automation	RS-232 (Dsub 9) / LAN RJ45	RS-232 (Dsub 9)	RS-232 (Dsub 9) / LAN RJ45	
12V Trigger	1			
Digital Keystone	YES (not compatible with 3D Mode)			
Box dimensions	610x580x410 mm 21 kg			
3D Glasses	Active Shutter Glasses (P/N R1048205)			
Ceiling Mount Kit	Optional (P/N R9852067)			
Cinemascope Kit	Cine-Twist Kit (P/N T9006000)			

