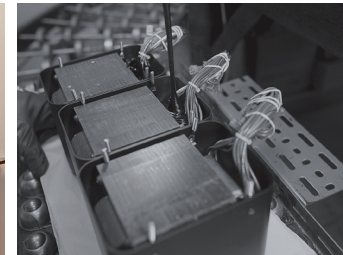


MC1.25KW power amplifier

- Our most powerful single chassis monoblock amplifier.
- Delivers 1,200 Watts via our Autoformer™ into a 2, 4 or 8 Ohm speaker with a nearly imperceptible total harmonic distortion of 0.005%.
- Updated yet unmistakable McIntosh industrial design that fits right in with current McIntosh products or those made decades ago.
- A 50% increase in filter capacity from previous generation improves the performance of low end frequencies and increases dynamic headroom.
- Other updates include an updated power transformer, heavier gauge internal wiring, upgraded circuit components, addition of our power management system, and a repositioned AC receptacle for easier use of power cords.
- Full of numerous McIntosh technologies including Power Guard®, Sentry Monitor™, Quad Balanced design, McIntosh Monogrammed Heatsinks™, patented Solid Cinch™ speaker binding posts and Power Control.
- Signature black glass front panel features new direct LED backlighting for improved appearance and color accuracy.
- Sits atop a beautiful polished stainless steel chassis and is completed with a fast responding 11" (27.9 cm) blue Watt meter, control knobs, illuminated logo and aluminum end caps with handles.



The Pure Power Your Speakers Deserve

McIntosh®

LEGENDARY PERFORMANCE™

www.mcintoshlabs.com

MC1.25KW power amplifier

Power Output:

1,200 Watts into a 2, 4 or 8 Ohm speaker

Total Harmonic Distortion:

0.005% maximum from 20Hz to 20kHz

Signal to Noise Ratio:

124dB Balanced

120dB Unbalanced

Dynamic Headroom:

2.2dB

Damping Factor:

Greater than 40 Wideband

Frequency Response:

+0, -0.25dB from 20Hz to 20kHz

+0, -3.0dB from 10Hz to 100kHz

Inputs & Outputs:

- 1 Balanced input
- 1 Unbalanced input
- 1 Balanced output
- 1 Unbalanced output

Overall Dimensions (W x H x D):

17-3/4" (45.09cm) x 12-5/16" (31.27cm)
x 22" (55.88cm)

Weight:

158 lbs (71.7kg) net,

184 lbs (83.4kg) in shipping carton



For the Consumer's Protection:

In order to ensure the highest level of customer satisfaction, new McIntosh products may only be purchased from an Authorized McIntosh Dealer; and, with certain limited exceptions may only be purchased over-the-counter or delivered and installed by the Authorized McIntosh Dealer. McIntosh does not warrant, in any way, products that are purchased from anyone who is not an Authorized McIntosh Dealer, or that have had their serial numbers altered or defaced.

Companion Products

The C1100, C2600 or C52 Preamplifier, D1100 Digital Preamplifier, MT10 Precision Turntable, MCD550 SACD/CD Player, MR87 AM/FM Tuner, MB50 Streaming Audio Player and XRT1K Loudspeakers are logical companions for the MC1.25KW Power Amplifier. Your Authorized Dealer can provide additional information on other McIntosh product combinations.

To learn more, please call us at 1.800.538.6576.

McIntosh®

LEGENDARY PERFORMANCE™

www.mcintoshlabs.com