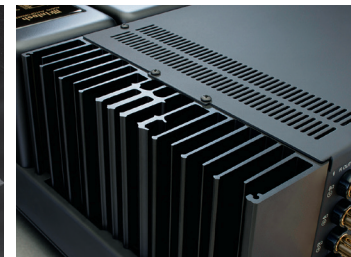
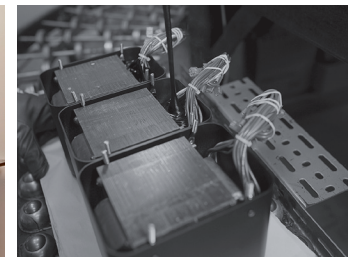


RS200 wireless loudspeaker system

- Next generation home audio wireless speaker system that delivers 650 Watts of room filling sound.
- Includes virtually everything you need to enjoy your music streamed from the cloud or handheld devices, music stored on your computer, or music played from legacy audio sources.
- Wireless: Apple® AirPlay® 2; Bluetooth® 5.0 with support for AAC, Qualcomm® aptX™ HD and Qualcomm aptX Low Latency; DTS Play-Fi®, and DLNA support.
- Voice control available via Amazon Works With Alexa.¹
- Wired: audio-only HDMI input to connect TVs that have Audio Return Channel (ARC); optical input to connect TVs without ARC and other digital sources; USB Type-B input to play music from your computer; AUX input to connect analog sources; subwoofer output.
- For enveloping home theater sound, connect a pair of our RS100 Wireless Speakers (sold separately) to use as surround speakers.

1. Requires use of a third party Alexa Built-in Product (sold separately). The RS200 and Alexa Built-In Product must be on the same network. The RS200 does not contain any listening capabilities and relies entirely on an Alexa Built-In Product control device for voice control.



Versatile Home Audio System

McIntosh®

LEGENDARY PERFORMANCE®

www.mcintoshlabs.com

RS200 wireless loudspeaker system

LOUDSPEAKER SPECIFICATIONS

System Driver Complement:

- (2) 20mm Titanium Dome Fluid-filled Tweeters
- (4) 50mm Titanium Inverted Dome Midranges
- (2) 4 x 6 inch Long Throw Woofers

Frequency Response:

40Hz - 20kHz

Crossover Frequency:

275Hz, 4,000Hz

Enclosure Finish:

High Gloss Black

Grille:

Black knit cloth

CONNECTIVITY

Wireless:

- Apple AirPlay 2
- Bluetooth 5.0 A2DP with support for AAC, aptX HD and aptX Low Latency DTS Play-Fi
- Wi-Fi 802.11 a, b, g, n 2.4/5GHz

Wired:

- (1) Audio-only HDMI input
- (1) Optical input
- (1) USB Type-B input
- (1) AUX input
- (1) Subwoofer output

WEIGHTS & DIMENSIONS

Overall Dimensions (W x H x D):

24-13/16" (62.99cm) x 5-3/4" (14.48cm) x 12-5/8" (32cm)

Weight:

29.5 lbs (13.3kg) net

For the Consumer's Protection:

In order to ensure the highest level of customer satisfaction, new McIntosh products may only be purchased from an Authorized McIntosh Dealer; and, with certain limited exceptions may only be purchased over-the-counter or delivered and installed by the Authorized McIntosh Dealer. McIntosh does not warrant, in any way, products that are purchased from anyone who is not an Authorized McIntosh Dealer, or that have had their serial numbers altered or defaced.



To learn more, please call us at 1.800.538.6576.

The RS200 is compatible with AirPlay 2. iOS 11.4 or later is required. To wirelessly stream music to the RS200 via Apple AirPlay 2 or Play-Fi, a wireless router is required. Router not included.

Qualcomm is a trademark of Qualcomm Incorporated, registered in the United States and other countries. aptX is a trademark of Qualcomm Technologies International, Ltd., registered in the United States and other countries. Qualcomm aptX is a product of Qualcomm Technologies, Inc. and/or its subsidiaries.

Amazon, Alexa and all related logos are trademarks of Amazon.com, Inc. or its affiliates.

Non-McIntosh-Provided Services: Embedded and/or non-embedded services, e.g. those listed above, are necessary for full functionality, are provided by companies unrelated to McIntosh, and are beyond McIntosh's control. McIntosh cannot and does not warrant against interruption, discontinuance, unsatisfactory performance, reduced Product functionality, or damages of any kind attributable to such services or their providers.

McIntosh®

LEGENDARY PERFORMANCE®

www.mcintoshlabs.com