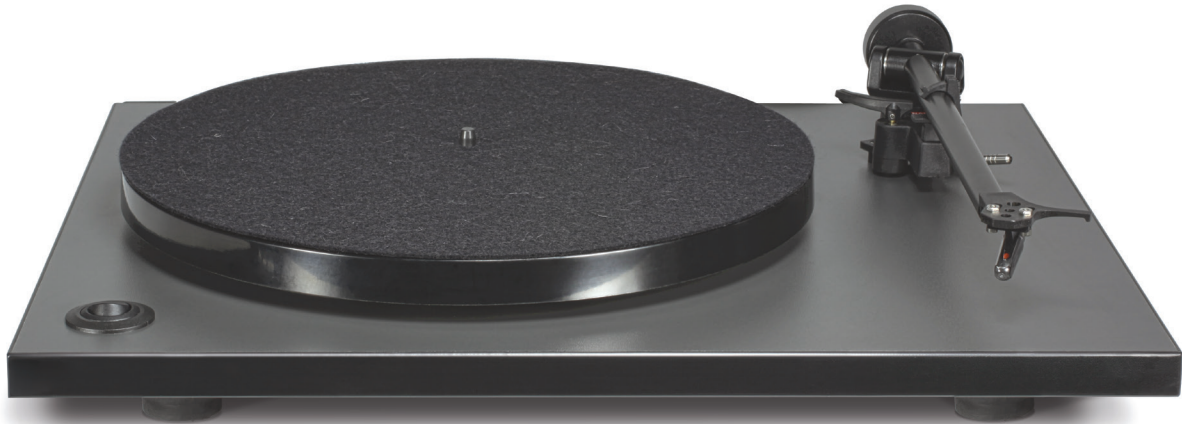




C 556 Turntable



Time to enjoy vinyl collections with extraordinary quality and NAD sound! With a minimalist design, our C 556 Turntable offers accurate reproduction of vinyl music by using performance-focused parts and components that put music first. Simply connect our C 556 to your NAD amplifier, set the balance weight, and discover your inner 'vinyl' with rich and authentic sounds that would typically be heard from a turntable costing far more.



Features

> Keep it Simple

Improving upon past designs, our newest turntable presents vinyl lovers with a simple collection of high quality parts. With a precision main bearing and low vibration motor, the C 556 will reduce speed variations, and with assistance from other key components, minimise the amount of data lost through absorption as you play your favourite LP.

> Solid Foundation

With our compression moulded Phenolic Resin platter, listen to all of your favourite vinyl records without a glitch in quality or performance. Phenolic Resin is one of the hardest and stiffest plastic materials ever made, giving the C 556's platter improved flywheel effect, excellent stability, and reduced speed variations.

> Audible Precision

By reducing the size and number of mechanical joints in our newly designed hand-assembled tonearm, energy-absorbing mass is kept at a minimum. Less mass allows the C 556's tonearm to accurately track vinyl records and limit the amount of perceptible distortion. You'll love how this makes your vinyl collection more nuanced and dynamic.

> Tailored Speed

To further reduce speed inconsistencies and wear on the drive belt, you can modify and change the playing speed of your vinyl records. By removing the platter, you can move the belt to either the 33 or 45rpm wheel of the drive pulley to attain the correct pitch of a musical track.

Features and Specifications

	C 556
Main Bearing	12mm diameter (high tolerance on bore diameter)
Platter	18mm Phenolic Resin
Cartridge	AudioTechnica AT91BL
Motor	High Quality synchronous motor
Plinth edging	Square edged plinth
DRIVE SYSTEM	Belt drive
Motor	High torque synchronous
Speeds	33.3 & 45.1rpm
TONEARM	Three piece aluminium/Glass Filled Nylon
Operation	Manual
Length (pivot to stylus)	244mm
Mass	9g
Overhang	19.1mm
Cartridge weight	5.0g
Verticle tracking force	1.75g
Cable capacitance	150 -400pF
CARTRIDGE SPECIFICATION	
Transducer	Moving Magnet
Frequency response	±2dB, 20Hz-20kHz
Channel balance	2dB at 1kHz
Channel separation	22dB at 1kHz
Output Level	4mV ±2dB at 1 kHz at 5cm/s
Static compliance	16mm/N
Equivalent tip mass	0.7mg
Verticle tracking angle	20°
Stylus radius	r/R 8/18µm
Stylus Type	5E
ELECTRICAL CHARACTERISTICS	
Load resistance	47kΩ
Load capacitance	200-400pF
Internal inductance	450mH
Internal resistance	750Ω
PHYSICAL SPECIFICATIONS	
Dimensions (W x H x D) Gross*	447 x 115 x 356mm 17 3/8 x 4 9/16 x 14"***
Net Weight	5.25kg (11.57lbs)
Shipping Weight	6.9kg (15.21lbs)

* Gross dimensions include feet, extended buttons and rear panel terminals.

** Non-metric measurements are approximate. NAD Electronics will not assume any liability for errors being made by retailers, custom installers, cabinet makers, or other end users based on information contained in this document.

Note: Installers should allow a minimum clearance of 55mm for wire/cable management.



NAD Electronics International reserves the right to change specifications or features without notice. NAD is a registered trademark of NAD Electronics International. All rights reserved. No part of this publication may be reproduced, stored, or transmitted in any form whatsoever without the written permission of NAD Electronics International. © 10/13 11-039 NAD Electronics International.

www.NADelectronics.com