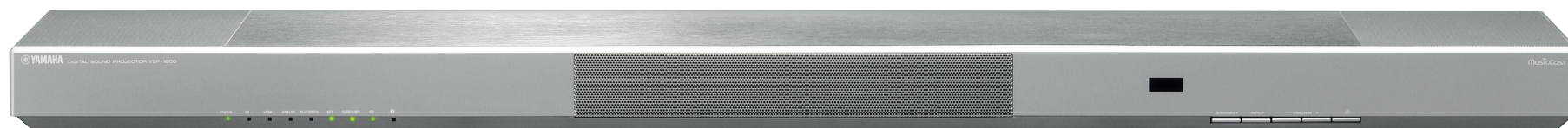
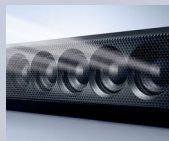


For extremely advanced listening pleasure.



Digital Sound Projector  
**YSP-1600**



**MusicCast**



Scan code  
for more  
information

MusicCast is a new revolution in network audio, use all your MusicCast products together or separately, it's completely up to you. Control it, all from one app, designed to be intuitive, quick and simple to use. Use a soundbar, a wireless speaker, an AV Receiver, HiFi audio whichever suits you best, mix and match then expand your MusicCast system as time goes on. All new from Yamaha, the MusicCast system brings everything to everywhere for everyone.



*Powered by music*

# Digital Sound Projector YSP-1600

Stylishly slim Soundbar featuring Digital Sound Projector technology for real 5.1ch surround sound. MusicCast for enjoying a variety of music sources anywhere in your house. HDCP2.2 compliant HDMI supports 4K Ultra HD input.



Silver finish available.

musicCast

**5 Beam** 5.1 ch 



\*Streaming service availability varies by region.

## Sound Quality and True Surround Sound

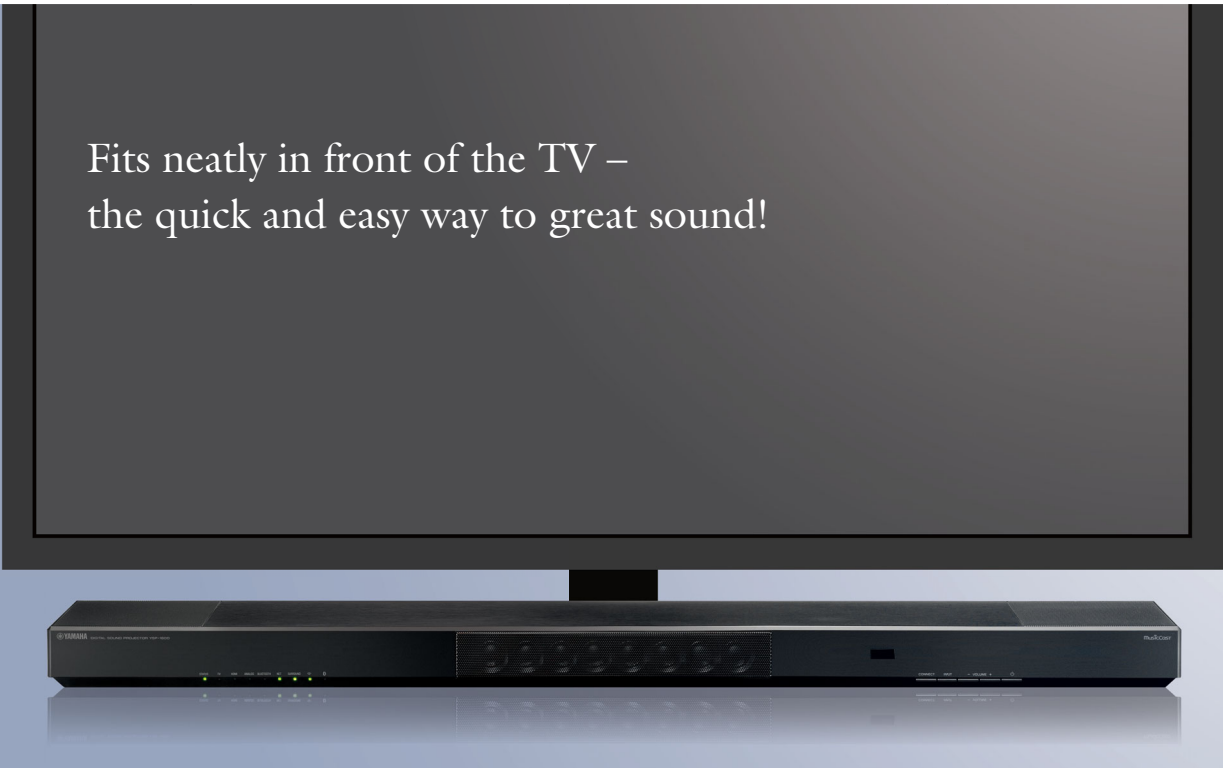
- Digital Sound Projector technology with eight array speakers reproduces true 5.1ch surround sound
- Dual upward-facing built-in subwoofers with bass reflex ports deliver high response and clear bass sound
- Provides a choice of five CINEMA DSP programmes
- Compatible with DTS and Dolby Digital
- Supported high resolution audio codec: Flac/WAV/AIFF 192khz, Apple lossless 96khz

## Network Function and App Control

- MusicCast for audio enjoyment in every room
- Compatible with various music streaming services
- HOME THEATER CONTROLLER app enables detailed settings and easy operation
  - Beam setup for adjustment of beam directionality for room size and listening position
- *Bluetooth*® for wireless music streaming (SBC/AAC)
- AirPlay® allows music streaming from Mac, PC, iPod, iPhone, iPad
- Supports *Bluetooth* output for pairing YSP-1600 and other *Bluetooth* equipped products

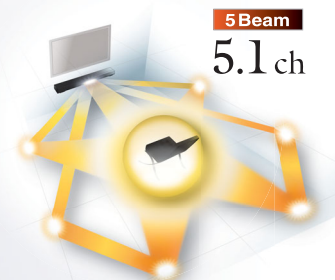
## Advanced Features

- HDMI input with 4K60p Pass through and HDCP2.2
- OSD supports overlay and multiple languages (Japanese, English, German, French, Spanish, Italian, Dutch, Russian, Swedish, Turkish)
- HDMI CEC and Audio Return Channel compatibility
- Subwoofer output terminal
- Slim cabinet design: height is only 6.5cm (2-1/2")



### Digital Sound Projector Technology Delivers True Surround Sound

Yamaha's unique Digital Sound Projector technology achieves actual (not virtual) surround sound in your home theatre. Eight 2.8cm (1-1/8") high quality array speakers create beams of sound that are precisely time- and direction-controlled using digital signal processing. The sound reflects off the walls, enveloping you in true surround sound. Beam positions can be adjusted using the remote control or a smartphone app, allowing many people to enjoy the realistic, expansive sound.

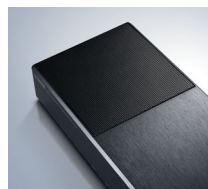


### True Realism and Powerful Surround Sound from a Slim Body

The slim body makes it extremely easy to position the unit in front of a TV, ensuring that the screen is not blocked. The 76W digital amplifier, eight beam speakers and two built-in subwoofers produce truly high quality surround sound from your TV, smartphone or other source.

### Dual Built-in Subwoofers

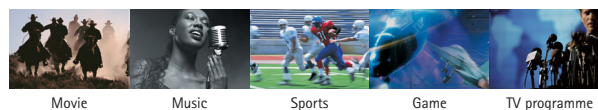
Two upward-facing powerful 8.5cm (3-1/4") subwoofers are built into the ends of the unit. Combined with the bass reflex port and wide, large volume body, the YSP-1600 will deliver clear, deep and expansive bass to enhance the enjoyment of movies and music.



### Provides a Choice of Five CINEMA DSP Programmes



Yamaha's ultra-sophisticated Cinema DSP technology creates thrillingly realistic soundscapes in any room. You can use the app to select five different programmes: Movie, Music, Sports, Game or TV programme.



### Compatible with DTS and Dolby Digital

The YSP-1600 is compatible with popular surround sound formats, such as Dolby Digital and DTS Digital Surround, so you get the full effect of multichannel movie sound.



### Clear Voice Makes Dialogue and Narrations Easy to Hear

Clear Voice raises the level of dialogue and narrations while maintaining overall sound quality. Movies and TV shows, sports commentary and news broadcasts are more clearly audible.



### Jack for an Extra Subwoofer

The Subwoofer Out jack lets you connect an additional subwoofer to enjoy even more powerful bass sound.





### Wireless Music Streaming via *Bluetooth* or AirPlay

Enjoy music from your smartphone or tablet wirelessly using a *Bluetooth* connection. You can also use the convenient AirPlay function for wireless music streaming from iPhone or iPads. In addition, a Network Standby function provides the convenience of having the YSP-1600 turn on and off automatically.



### *Bluetooth* Output for Convenient Music Streaming

The YSP-1600 is equipped with the latest *Bluetooth* technology, making wireless operation more convenient than ever. You can stream music from the YSP-1600 to *Bluetooth* headphones for private listening or to *Bluetooth* speakers for enjoying your music in another room.



\* Bluetooth streaming can only be used for one device at a time.

### MusicCast

#### MusicCast Expands Entertainment Possibilities

MusicCast employs a high performance wireless network to deliver music and audio enjoyment. It can stream digital music content from your smartphone, PC or NAS to other MusicCast devices in your home. It can also share the music from external devices such as a TV or BD player connected to the YSP-1600. Audio content from *Bluetooth*-connected smartphones or tablets can also be streamed to MusicCast devices in multiple rooms.

#### Streaming from external devices



### Streaming Services Offer a Huge Range of Listening Choices

Support for the music streaming services Spotify, Pandora, Juke, Napster, Rhapsody and Sirius XM means you'll enjoy a wide variety of music content. Furthermore, support for the vTuner radio station database enables sampling of Internet radio broadcasts from around the world.



\*Streaming service availability varies by region.

### App for Easy Operation and Setup

The YSP-1600 is compatible with a free controller app for iOS and Android. The easy-to-see and easy-to-use operating screen uses icons to let you easily perform a variety of operations while watching your smartphone or tablet screen. You can also make detailed settings for the beam sound output.



#### Beam setup

Input room size and distance to walls for detailed beam positioning. There's also a test tone.



### HDMI Terminal and 4K Ultra HD Support with 4K60p, HDCP2.2

The YSP-1600 completely supports the latest HDMI standards. Thanks to transmission of 4K video at 60 frames per second pass-through, you can fully enjoy the high definition video quality of 4K without degradation. It also adheres to the HDCP2.2 copyright protection standard for 4K video transmission.



### Other Notable Features

- OSD supports overlay and multiple languages (Japanese, English, German, French, Spanish, Italian, Dutch, Russian, Swedish, Turkish)
- HDMI CEC and Audio Return Channel compatibility

#### Main Specifications

Output Power	76W total power: 2.0W x 8 beam drivers + 60W (30W x 2) subwoofer
Drivers	2.8 cm (1-1/8") x 8 beam drivers, Dual 8.5 cm (3-1/4") subwoofers
System Frequency Response	50 Hz-22 kHz
Terminals	[Input] HDMI:1, Optical:1, Stereo mini:1 [Output] HDMI:1, Subwoofer output:1
Network Functions	[Network connections]: Ethernet, Wi-Fi, Wireless direct [Bluetooth]: (Version) Ver. 2.1 + EDR (Profile) A2DP, AVRCP (Audio Codec) SBC, AAC
Standby Power Consumption	0.4W (HDMI Control OFF, Network Standby OFF), 1.8W ( Network standby ON, Wi-Fi connection)
Dimensions (W x H x D)	1000 x 65 x 130 mm (with antenna up: 1000 x 134 x 152 mm), 39-3/8" x 2-1/2" x 5-1/8" (with antenna up: 39-3/8" x 5-1/4" x 6")
Weight	4.7 kg; 10.4 lbs.

• The Wi-Fi CERTIFIED Logo is a certification mark of the Wi-Fi Alliance. The Wi-Fi Protected Setup Identifier Mark is a mark of the Wi-Fi Alliance. • DLNA™ and DLNA CERTIFIED™ are trademarks or registered trademarks of Digital Living Network Alliance. All rights reserved. Unauthorized use is strictly prohibited. • Spotify and Spotify logo are registered trademarks of the Spotify Group. • Napster and the Napster logo are trademarks and registered trademarks of Rhapsody International. • JUKE and JUKE logo are registered trademarks of Media-Saturn-Holding GmbH. The *Bluetooth*™ word mark and logos are registered trademarks owned by *Bluetooth* SIG, Inc. • Dolby and the double-D symbol are registered trademarks of Dolby Laboratories. • DTS, the Symbol & DTS and the Symbol together are registered trademarks of DTS, Inc. • HDMI, the HDMI logo and High-Definition Multimedia Interface are trademarks or registered trademarks of HDMI Licensing LLC in the United States and other countries. • CINEMA DSP is trademarks of Yamaha Corporation.