

CHORUS 806 V

Product specification sheet

Aluminum/Magnesium inverted dome TNV tweeter.
Extended response to 28kHz, ready for SACD.

6¹/₂" (165mm) Polyglass mid-bass.
Dynamic medium, articulated bass.

Aerodynamic port.
Low distortion.



Acrylic core, black mirror effect.
Exclusive finish.

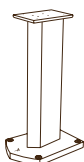
Solid MDF construction
up to 1" (25mm) width.
Non parallel inner wall structure.

OPC crossover.
Perfect staging.
New insulated Focal terminals.



- ◆ High-end design, affordable luxury.
- ◆ Speakers designed and manufactured by Focal.

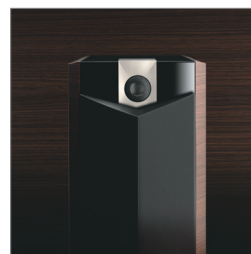
- ◆ A sound quality never before seen at this price level.
- ◆ Acrylic core, 2 side finishes ; Moka and Ebony.



Optional 24" (60cm) S 800 V stand.

Type	2-way bass-reflex bookshelf loudspeaker, wall mounting
Drivers	6 ¹ / ₂ " (165mm) Polyglass mid-bass 1" (25mm) TNV Al/Mg inverted dome tweeter
Frequency response (+/- 3dB)	55Hz- 28kHz
Low frequency point (- 6dB)	47Hz
Sensitivity (2.83V/1m)	90dB
Nom. impedance	8 ohms
Minimum impedance (@25°C)	3.6 ohms @ 226Hz
Max. power handling.	120W
Power RMS	80W
Crossover frequency	3kHz
Dimensions (HxWxD)	15 ³ / ₈ " x 8 ³ / ₄ " x 11 ⁹ / ₁₆ " (390x222x293mm)
Net weight	18lbs (8.2kg)

Neutral and balanced, the Chorus 806 V seduces by the richness of its upper midrange and the speed of its bass. An entirely refined speaker, ideal to play in rooms under 20 m² without any limits. And easily larger spaces if it is combined with SW 800 V.



FOCAL
the spirit of sound