

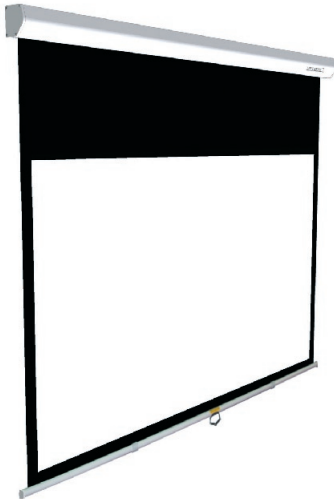


### Today's Best Manual Screen

The Capitol Premium offers the best of a manual screen: treated screen material for perfect image, black borders, extra-drop for a better contrast, opaque black back to install it in front of a window.

To roll it up, you'll just need to release it and the whole material will rise very smoothly thanks to its advanced technology called SSR.

The fast and safe clipping system will allow wall, ceiling and even suspended mounting. This fastening system has a large latitude for brackets placement: an important advantage for specific installations.



Wall, ceiling or suspended



Easy to install



Fast & safe clipping system



Smooth screen rising



Automatic locking system

### Specifications

#### Screen Material

PVC screen material WMat-ST  
1.0 Gain  
150° Directivity  
No hot spot  
Permanent white treatment  
Anti-Static  
No corrugated effect  
Opaque black back  
Black borders  
Optimal surface for DLP and LCD projectors  
Automatic locking system, simple and efficient  
Smooth screen rising



#### Case

White lacquered aluminum  
Safe clipping system  
Easy and fast install  
Wall and ceiling mounting  
Hook for hanging installation from ceiling

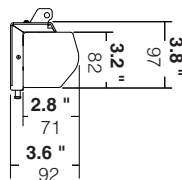
#### Warranty

2 years

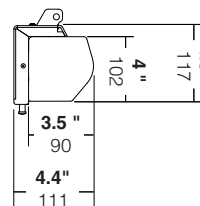
### Dimensions / Weights

	Ratio	Diagonal inch/mm	Image area		Screen size		Case size with brackets			Net Weight lbs/kg	Gross Weight lbs/kg	Packaging size		
			W	H	W	H	W	H	D			W	D	H
Capitol Premium 200V	4/3	100	79,9	59,8	83,9	65,4	86,7	3,8	3,6	23,1	29,3	94,3	5,7	5,1
		2536	2030	1520	2130	1660	2201	97	92	10,5	13,3	2396	145	130
Capitol Premium 200C	16/9	92	79,9	45,1	83,9	65,4	86,7	3,8	3,6	23,1	29,3	94,3	5,7	5,1
		2331	2030	1145	2130	1660	2201	97	92	10,5	13,3	2396	145	130
Capitol Premium 240V	4/3	115	92,1	69,1	95,8	77,0	98,7	4,6	4,4	30,5	39,2	108,3	6,4	5,9
		2925	2340	1755	2434	1956	2508	117	111	13,85	17,8	2750	162	150
Capitol Premium 240C	16/9	106	92,1	51,8	95,8	77,0	98,7	4,6	4,4	30,5	39,2	108,3	6,4	5,9
		2685	2340	1316	2434	1956	2508	117	111	13,85	17,8	2750	162	150
Capitol Premium 280V	4/3	139	110,9	83,1	114,8	88,6	111,4	4,6	4,4	40,0	49,5	136,2	6,4	5,9
		3520	2817	2110	2917	2250	2830	117	111	18,2	22,5	3460	162	150
Capitol Premium 280C	16/9	127	110,9	62,4	114,8	75,8	111,4	4,6	4,4	40,0	49,5	136,2	6,4	5,9
		3232	2817	1585	2917	1925	2830	117	111	18,2	22,5	3460	162	150

Capitol Premium (200V, 200C)

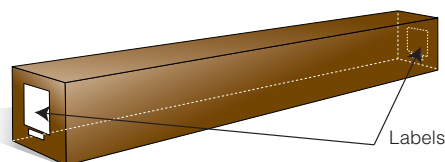


Capitol Premium (240V, 240C, 280V, 280C)



Case with bracket - Side view

### Details



Packaging