

# Panasonic



65-inch 1080p Full HD Plasma Display

## TH-65VX300ER

### Product fiche

Manufacturer	Panasonic Corporation
Model No.	TH-65VX300ER
Energy efficiency class	D
Visible screen size (diagonal)	165 cm / 65 inches
On mode average power consumption	390 W
Annual energy consumption*	569 kWh/year
Standby power consumption	0.50 W
Off mode power consumption	0.30 W
Display resolution (WxH)	1,920 x 1,080

\*Energy consumption XYZ kWh per year, based on the power consumption of the television operating 4 hours per day for 365 days.  
The actual energy consumption will depend on how the television is used.  
(Product fiche: Based on (EU) No. 1062/2010 ANNEX III).

### Product specification (design and specification subject to change without notice)

#### DISPLAY

Aspect ratio	16:9
Effective Display Area (W x H)	1,434 x 806 mm
Pixel Pitch (H x V)	0.747 x 0.747 mm
Contrast Ratio	5,000,000 :1
Gradation	12,288 steps (equivalent)
Panel Life*1	approx. 100,000 hours
Full HD 3D	Yes*2

\*1: Guideline operating hours before the panel brightness is reduced to half when the panel is used to display motion pictures in the Standard mode.  
Afterimages (burned-in images) and malfunctions are not taken into consideration.

\*2: An optional 3D Eyewear are required for viewing 3D images.

#### CONNECTION TERMINAL

COMPONENT/RGB IN	BNC x 3	Y/G : with sync 1.0 V p-p (75 Ω) P <sub>B</sub> /C <sub>B</sub> /B : 0.7 V p-p (75 Ω) P <sub>R</sub> /C <sub>R</sub> /R : 0.7 V p-p (75 Ω)
AUDIO IN (L/R)	RCA Pin jack x 1 set	0.5 V rms
HDMI IN	HDMI TYPE A x 2	
PC IN	MINI D-sub 15 Pin x 1	Y or G with sync 1.0 Vp-p (75 Ω) Y or G without sync 0.7 Vp-p (75 Ω) P <sub>B</sub> /C <sub>B</sub> /B : 0.7 Vp-p (75 Ω) P <sub>R</sub> /C <sub>R</sub> /R : 0.7 Vp-p (75 Ω) HD/VD : 1.0 - 5.0 Vp-p (high impedance)
AUDIO IN (L/R)	Stereo mini jack (M3) x 1	0.5 V rms (Common terminal with DVI-D, IN)
Function Slot: SLOT 2.0	Yes	

#### CONTROL TERMINAL

LAN	RJ45 10 BASE-T/100 BASE-TX, Compatible with PJ Link
SERIAL	D-sub 9 Pin x 1 (EXTERNAL CONTROL TERMINAL), RS-232C Compatible
3D shutter out	M3 jack x 1 (for 3D IR Transmitter)
DC 8V out for 3D IR Transmitter	Center Plus for EIAJ 4 mm Plug

#### ELECTRICAL

Power Requirements	220-240 V AC, 50 Hz/60 Hz
Rated Power Consumption	450 W
Stand-by condition	Save On 0.5 W, Save Off 0.8 W

#### SOUND

Audio Output	8Ω, 20 W [10 W + 10 W] (10% THD)
--------------	----------------------------------

#### MECHANICAL

Dimensions (W x H x D)	1,554 × 924 × 94 mm
Carton Dimensions (W x H x D)	1,700 x 1,130 x 400 mm
Weight	approx. 60.0 kg
Gross weight	approx. 76.0kg
Cabinet Color	Black

#### ENVIRONMENTAL

Operating environment	Temperature: 0 °C to 40 °C
	Humidity : 20 % to 80 % (Non condensation)
	Altitude : 0 to 2,800 m
Storage environment	Temperature: -20 °C to 60 °C
	Humidity : 20 % to 90 % (Non condensation)
	Altitude : 0 to 3,300 m

#### REMOTE CONTROL TRANSMITTER

Power Requirements	DC 3 V (2 x R6 (UM3) Size batteries)
Operation distance	approx. 7 m in front of plasma display
Weight	approx. 160 g including batteries

**MAIN FEATURE**

Gamma	1.0/2.2/2.35/2.4/2.6
Color space adjustment (Color Gamut)	DIGITAL CINEMA COLOR/CUSTOM/NATIVE/BT.709/EBU/SMPTE-C
External Scaler	Yes
Picture profile (Memory save)	Yes
WAVEFORM MONITOR	ON (Full scan, Single line scan)/OFF
RGB/MONO settings	BLUE ONLY/RGB/MONO
Screen Saver	Negative image, Scrolling bar only, White screen, Overlay scrolling bar
NANO DRIFT Saver	Yes (LOW/MID/HIGH)
Power Save	Yes
Stand By Save	Yes
3D INPUT FORMAT	AUTO/SIDE BY SIDE/TOP AND BOTTOM/NATIVE/SIMULTANEOUS
3D VIEWING MODE	3D/COMPARISON (SIDE BY SIDE/TOP AND BOTTOM)/LEFT/RIGHT
Function button (Remote controller)	1~4
Network function	Yes
TEST PATTERNS	Color bars/Red/Green/Black/1%window/Frame/Blue
HV DELAY	H DELAY/V DELAY/HV DELAY/OFF
OVER SCAN	Yes
UNDER SCAN	Yes
Studio Gain	Yes
Color Temperature	NORMAL-WARM-WARM2-WARM3-COOL-STUDIO
MARKER SETTINGS	Aspect marker/Safe area marker/Center marker/Crossharch marker

**INCLUDED ACCESSORIES**

- AC power cord - Operating instruction book - Clamper
- Ferrite core x 2 - Remote control transmitter - Batteries

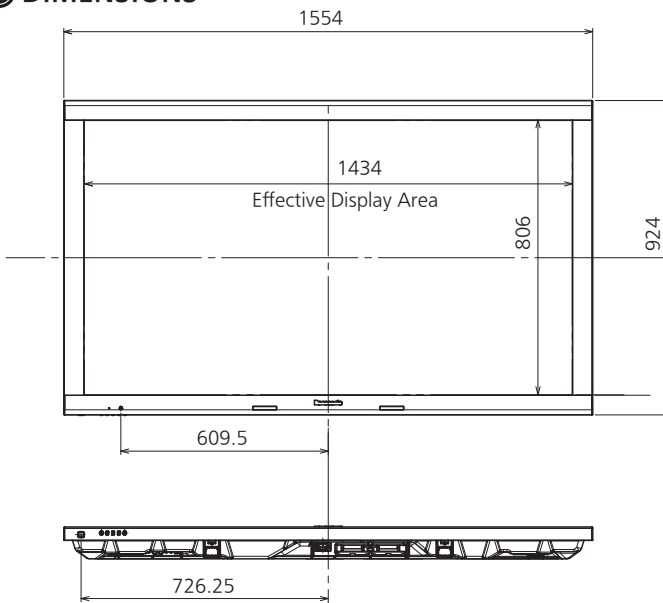
**OPTIONAL ACCESSORIES**

Pedestal	TY-ST65VX300
Wall-hanging bracket (vertical/angled)	TY-WK65PR20
Speakers	TY-SP65P11WK
3D IR Transmitter	TY-3D30TRW
3D Eyewear	TY-EW3D3LE TY-EW3D3ME TY-EW3D3SE
Dual HD-SDI Terminal Board with 3D signal	TY-FB30DHD3D
Dual DVI-D Terminal Board with 3D signal	TY-FB30DD3D
BNC Dual Video Terminal Board	TY-FB9BD
DVI-D Terminal Board	TY-FB11DD
Dual HDMI Terminal Board	TY-FB10HMD
HD-SDI Terminal Board	TY-FB9HD
HD-SDI with Audio Terminal Board	TY-FB10HD
Dual link HD-SDI Terminal Board	TY-FB11DHD
AV Terminal Box	TY-TB10AV

**STANDARD (CERTIFICATIONS)**

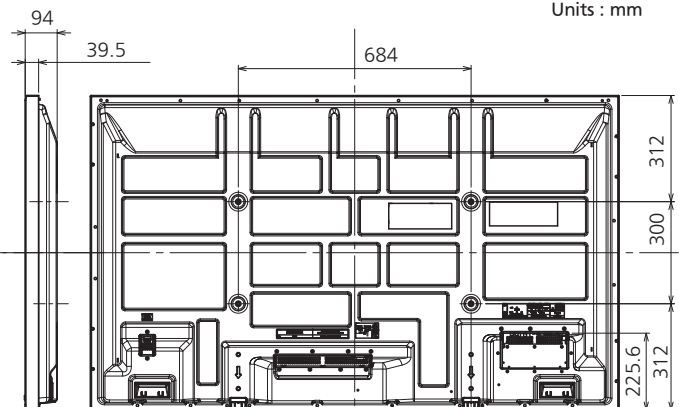
SAFETY REGULATIONS	EN60065, IEC60065, GOST
RADIATION REGULATIONS	EN55022 Class-B, EN55024, EN61000-3-2, EN61000-3-3

**DIMENSIONS**

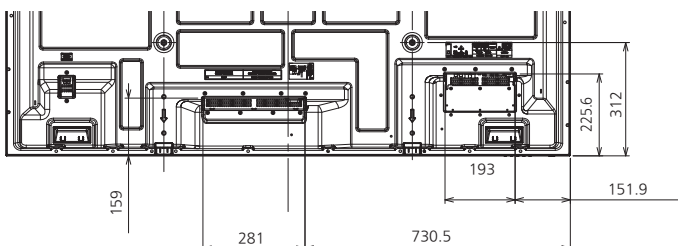


Cautions: This drawing is not a scale

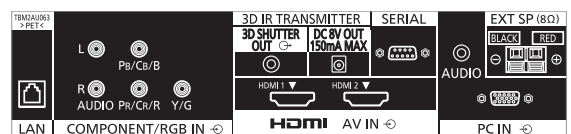
Units : mm



**TERMINAL DIMENSIONS**



**CONNECTION TERMINAL**



## ● Applicable Input Signals

\* Mark: Applicable input signal

	Signal name	Horizontal frequency (kHz)	Vertical frequency (Hz)	COMPONENT / RGB IN / PC IN (Dot clock (MHz))	HDMI
1	525 (480) / 60i	15.73	59.94	* (13.5)	*
2	525 (480) / 60p	31.47	59.94	* (27.0) *5	*
3	625 (575) / 50i	15.63	50.00	* (13.5)	
4	625 (576) / 50i	15.63	50.00		*
5	625 (575) / 50p	31.25	50.00	* (27.0)	
6	625 (576) / 50p	31.25	50.00		*
7	750 (720) / 60p	45.00	60.00	* (74.25)	*
8	750 (720) / 50p	37.50	50.00	* (74.25)	*
9	1,125 (1,080) / 60p	67.50	60.00	* (148.5) *1	*
10	1,125 (1,080) / 60i	33.75	60.00	* (74.25) *1	*
11	1,125 (1,080) / 50p	56.26	50.00	* (148.5) *1	*
12	1,125 (1,080) / 50i	28.13	50.00	* (74.25) *1	*
13	1,125 (1,080) / 24sF	27.00	48.00	* (74.25) *2	
14	1,125 (1,080) / 30p	33.75	30.00	* (74.25) *1	
15	1,125 (1,080) / 25p	28.13	25.00	* (74.25) *1	
16	1,125 (1,080) / 24p	27.00	24.00	* (74.25) *1	*
17	1,250 (1,080) / 50i	31.25	50.00	* (74.25) *3	
18	2,048 × 1,080 / 24sF *7	27.00	48.00		
19	2,048 × 1,080 / 24p *7	27.00	24.00		
20	640 × 400 @70 Hz	31.46	70.07	* (25.17)	
21	640 × 480 @60 Hz	31.47	59.94	* (25.18) *6	*
22	640 × 480 @72 Hz	37.86	72.81	* (31.5)	
23	640 × 480 @75 Hz	37.50	75.00	* (31.5)	
24	640 × 480 @85 Hz	43.27	85.01	* (36.0)	
25	800 × 600 @56 Hz	35.16	56.25	* (36.0)	
26	800 × 600 @60 Hz	37.88	60.32	* (40.0)	*
27	800 × 600 @72 Hz	48.08	72.19	* (50.0)	
28	800 × 600 @75 Hz	46.88	75.00	* (49.5)	
29	800 × 600 @85 Hz	53.67	85.06	* (56.25)	
30	852 × 480 @60 Hz	31.47	59.94	* (33.54) *6	*
31	1,024 × 768 @50 Hz	39.55	50.00		*
32	1,024 × 768 @60 Hz	48.36	60.00	* (65.0)	*
33	1,024 × 768 @70 Hz	56.48	70.07	* (75.0)	
34	1,024 × 768 @75 Hz	60.02	75.03	* (78.75)	
35	1,024 × 768 @85 Hz	68.68	85.00	* (94.5)	
36	1,066 × 600 @60 Hz	37.64	59.94	* (53.0)	*
37	1,152 × 864 @60 Hz	53.70	60.00		*
38	1,152 × 864 @75 Hz	67.50	75.00	* (108.0)	
39	1,280 × 768 @60 Hz	47.70	60.00	* (80.14)	
40	1,280 × 960 @60 Hz	60.00	60.00	* (108.0)	
41	1,280 × 960 @85 Hz	85.94	85.00	* (148.5)	
42	1,280 × 1,024 @60 Hz	63.98	60.02	* (108.0)	*
43	1,280 × 1,024 @75 Hz	79.98	75.03	* (135.0)	
44	1,280 × 1,024 @85 Hz	91.15	85.02	* (157.5)	
45	1,366 × 768 @50 Hz	39.55	50.00		*
46	1,366 × 768 @60 Hz	48.36	60.00	* (86.71)	*
47	1,400 × 1,050 @60 Hz	65.22	60.00		*
48	1,600 × 1,200 @60 Hz	75.00	60.00	* (162.0)	*
49	1,600 × 1,200 @65 Hz	81.25	65.00	* (175.5)	
50	1,920 × 1,080 @60 Hz	67.50	60.00	* (148.5) *4	*
51	1,920 × 1,200 @60 Hz	74.04	59.95		*
52	Macintosh13" (640 × 480)	35.00	66.67	* (30.24)	
53	Macintosh16" (832 × 624)	49.72	74.54	* (57.28)	
54	Macintosh21" (1,152 × 870)	68.68	75.06	* (100.0)	

\* 1: Based on SMPTE 274M standard.

\* 2: Based on SMPTE RP211 standard.

\* 3: Based on SMPTE 295M standard.

\* 4: The input signal is recognized as 1,125 (1,080) / 60p.

\* 5: When selected the RGB format and 525p signal input to the PC IN terminal, it is recognized as VGA 60Hz signal.

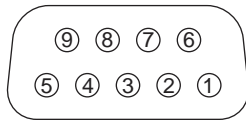
\* 6: When inputted VGA 60Hz format signal from the other than PC IN terminal, it is recognized as 525p signal.

\* 7: Based on SMPTE 292M and 372M standards. These signals can be received when the Dual Link HD-SDI Terminal Board (TY-FB11DHD) or the Dual HD-SDI Terminal Board for 3D (TY-FB30DHD3D) is installed.

Note: Signals without above specification may not be displayed properly.

### ● Pin assignments and signal names

#### ■ Serial Terminals Connection : D-sub 9-Pin



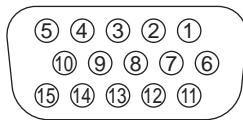
Pin No.	Details
②	R X D
③	T X D
⑤	GND
④ • ⑥	Non use
⑦ ⑧	⌈ (Shorted in this set)
① • ⑨	

These signal names are those of computer specifications.

#### Communication parameters

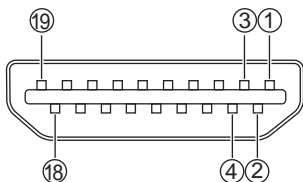
Signal level	RS-232C compliant
Synchronization method	Asynchronous
Baud rate	9600 bps
Parity	None
Character length	8 bits
Stop bit	1 bit
Flow control	-

#### ■ PC Input Terminals Connection : Mini D-sub 15-Pin



Pin No.	Signal Name	Pin No.	Signal Name	Pin No.	Signal Name
①	R (P <sub>R</sub> /C <sub>R</sub> )	⑥	GND (Ground)	⑪	NC (not connected)
②	G (Y)	⑦	GND (Ground)	⑫	SDA
③	B (P <sub>B</sub> /C <sub>B</sub> )	⑧	GND (Ground)	⑬	HD/SYNC
④	NC (not connected)	⑨	+5 V DC	⑭	VD
⑤	GND (Ground)	⑩	GND (Ground)	⑮	SCL

#### ■ HDMI connection



Pin No.	Signal Name	Pin No.	Signal Name
①	T.M.D.S Data2+	⑪	T.M.D.S Clock Shield
②	T.M.D.S Data2 Shield	⑫	T.M.D.S Clock-
③	T.M.D.S Data2-	⑬	CEC
④	T.M.D.S Data1+	⑭	Reserved (N.C. on device)
⑤	T.M.D.S Data1 Shield		
⑥	T.M.D.S Data1-	⑮	SCL
⑦	T.M.D.S Data0+	⑯	SDA
⑧	T.M.D.S Data0 Shield	⑰	DDC/CEC Ground
⑨	T.M.D.S Data0-	⑱	+5V Power
⑩	T.M.D.S Clock+		Hot Plug Detect