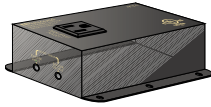


System Accessories

ACT-1



120 VAC - 12-Volt DC triggered outlet with resettable circuit breaker. Switches up to 10 amps.

3.75" W x 2" H x 5" D (9.5 x 5.1 x 12.7 cm)



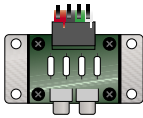
Order #

9500-115592

Shipping Weight
1 lbs. (.45 kg)

Min. Advertised Price
\$89.00

ADP-1.2



Speaker to line-level adapter. Recommended for use with CAA66 and CAM6.6 to obtain line level outputs for zones without pre-amp outputs. Color-coded detachable 14-gauge snap connectors.

3.375" W x 1" H x 2.5" D (8.6 x 2.6 x 6.4 cm)

Order #

9500-200891

Shipping Weight
14 oz (.4 kg)

Min. Advertised Price
\$39.00

SRM-2.1



Speaker relay module* to be used to share speakers between controllers and home theater. Add 12-VDC automatic A/B switching, speaker level, between CA amplifier and local amplifier. ***Wall plates not included with keypads.**

1.3125" W x 2.5" H x 1.875" D (33.5 x 63.5 x 48 mm)



Order #

Color

1200-115585	White
1200-114021	Almond

Shipping Weight
4 oz (.11 kg)

Min. Advertised Price
\$99.00

Data and Speaker Cable

AW162CL3



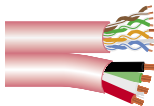
2 conductor, 16 gauge speaker cable, unshielded, 26/30 strands bare copper, .024 nominal PVC jacket, temp. rating 75° C, UL type CL3, LIGHT BLUE JACKET. 1000 foot pull-box only.

Order #

9000-119316

Call for Pricing

AW164C5



4 pair twisted, 24 gauge, CAT-5E cable, solid copper, PVC jacket, telephone/data grade/ISDN. Zipcord with 4 conductor, 16 gauge speaker cable. 500 foot spool. PINK jacket.

Order #

9000-121838

Call for Pricing

AW164CL3



4 conductor, 16 gauge speaker cable, unshielded, 26/30 strands bare copper, .024 nominal PVC jacket, temp. rating 75° C, UL Type CL3, YELLOW JACKET. 500 foot pull-box only.

Order #

9000-460067

Call for Pricing

AW2260AB



4 conductor, 22 gauge signal/data cable, 2 pair twisted w/shield, 19/34 tinned copper, PVC jacket, temp. Rating 75° C, UL Type CL3, WHITE JACKET. 1000 foot pull-box only. Conducts sensitive IR signals and shields them from outside noise.

Order #

9000-115240

Call for Pricing

AWCAT5

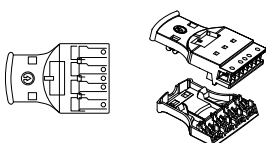


8 conductor, 24 gauge CAT-5E cable, 4 pair twisted, solid copper, PVC jacket, telephone/data grade/ISDN, GRAY JACKET. 1000 Foot pull-box only.

Order #

9000-119323

Call for Pricing



110 Patch Plug

S110P4

Two pieces, sold in quantities of 10 per pack.

Order #

8200-526756

Shipping Weight
TBD

Min. Advertised Price
\$130.00