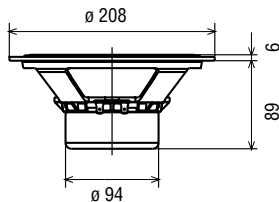


# HX 201

90 Watt max | 8 Ω | Ø 200 mm / 8"



## FULL RANGE

Membrana in cellulosa, sospensione in tela smorzata, magnete in neodimio schermato  
Paper cone, doped fabric surround, neodymium shielded magnet



Potenza nominale	<b>40 W</b>	Re	<b>5,39 Ω</b>	D	<b>163 mm</b>
Impedenza nominale	<b>8 Ω</b>	Fs	<b>53,4 Hz</b>	Vas	<b>44,6 dm<sup>3</sup></b>
Sensibilità (1W/1m)	<b>96 dB</b>	Qms	<b>6,41</b>	BxI	<b>6,6 Wb/m</b>
Ø bobina mobile	<b>25 mm</b>	Qes	<b>0,51</b>	Xmax	<b>1,75 mm</b>
Altezza traferro	<b>4 mm</b>	Qts	<b>0,47</b>	η <sub>o</sub>	<b>1,29 %</b>
Fori di fissaggio	<b>4 ∅<sup>5</sup> / Ø 194</b>	Mms	<b>12,2 g</b>	Le	<b>0,17 mH</b>
Foro pannello	<b>184 mm</b>	Cms	<b>0,72 mm/N</b>	Peso	<b>1,2 Kg</b>

